

# EX1N, 1S

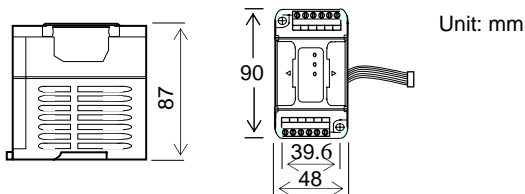
## Ex1s2LD (Load Cell) USER'S GUIDE

☛ This manual contains text, diagrams and explanations which will guide the reader in the correct installation and operation of the Ex1s2LD special function block.

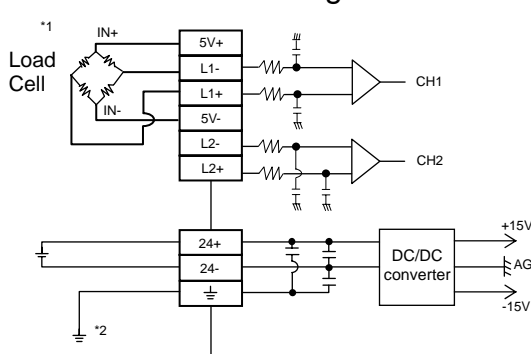
### \*\*\* Introduction \*\*\*

1) The Ex1s2LD type analog input block (Hereafter referred to as the Ex1s2LD) converts 2 points Load Cell of analog input values (EX: weight pressure) into digital values, and transfers them to the PLC main unit.

### \*\*\* External Dimensions \*\*\*



### \*\*\* Wiring \*\*\*



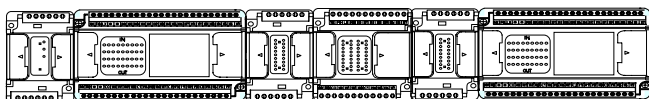
\*1 Use a two-core, twisted, shielded cable for the analog input line, and separate it from other power lines or a lines easily induced.

\*2 Make sure to connect the terminal to the terminal of the PLC main unit.

### \*\*\* Connection with PLC \*\*\*

- 1) The blocks not occupy any points. Only connect 1pc of module.
- 2) Applicable PLC : Ex1s, Ex1n, Ex2n series V2.22 or more.
- 3) Ex1s2LD are connected with the cable at the left of the main unit.

**Ex1s2LD** Ex1n32MR Ex1n2DA Ex1n16ER Ex1n2DA Ex1n32ER  
X00 - X17 X20 - X27 X30 - X47



Y00-Y17 Y20-Y37 Y40-Y47 Y50-Y67 Y70-Y107

### \*\*\* Specifications \*\*\*

#### 1. Environment specification

Item	Content
Directric Withstand voltage	500V AC 1min(Between analog input terminals and case)

Environmental specifications other than the above-mentioned are the same as the main unit of the Programmable controller. (Refer to the manual of the Programmable controller)

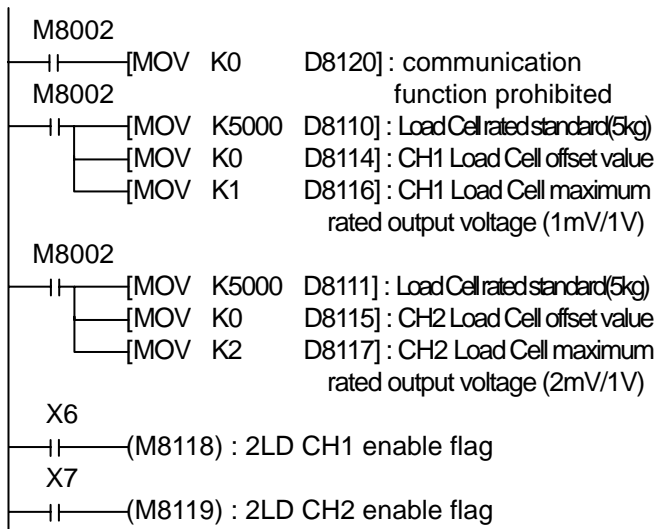
#### 2. Power supply specification and isolation

Item	Content
Analog circuits	24V DC±10% 85mA (supplied from the External)
Digital circuits	5V DC 30mA (supplied from main unit)
Isolation	Photo-coupler isolation between analog and digital circuits.

#### 3. Performance specifications

Item	Voltage input
Range of analog input	-40mV ~ +40mV
Analog output	12bit binary, 11bit + 1 sign bit
Resolution	40-(-40)/4000 = 0.02mV
A/D conversion time	1CH / 2 scan time

### \*\*\* Program Example \*\*\*



Measurement result stored into D8112(CH1) and D8113(CH2)

$$\diamond D8112 = \text{measured value} \times D8110 / (D8116 \times 10) + D8114$$

Ex1s2LD-edoc0309v100c

### LIYAN ELECTRIC INDUSTRIAL LTD.

TEL: 886-4-25613700 FAX: 886-4-25613408

WEBSITE: <http://www.liyanplc.com>

E-MAIL: [twliyan@ms16.hinet.net](mailto:twliyan@ms16.hinet.net)